

ITEM #CE-0926

**NON-LINE-OF-SIGHT  
SOLUTION!**

**900 MHz WIRELESS**

**D2™**

**OUTDOOR CAMERA PROTECTION**



### **THE TOTAL CAMERA PROTECTION + PORTABILITY SOLUTION**

The Dotworkz 900MHz Sidekick Wireless D2 camera enclosure combines unmatched protection from the environment, vandalism or physical damage with the portability and cost-effectiveness of wireless connectivity. It is engineered as an all-in-one, easy to install unit built to overcome all obstacles faced when deploying broadband remote camera video surveillance and monitoring systems. It integrates Avalan Wireless' most popular 900MHz wireless system directly into the enclosure, allowing it to function as either a long-range point-to-point or point-to-multipoint system transmitting digital data from IP network cameras with a throughput of up to 1.5Mbps.

#### **Trouble-Free Relocation**

You can easily reposition the 900MHz Sidekick Wireless D2 camera system from one location to the next in minutes without the need of advanced technical staffing. Once the station is paired up with its base station on a 900MHz frequency, it is up and ready to go. This on-the-fly portability makes it ideal for temporary installations, such as urban police surveillance or monitoring construction sites, museum exhibits or public events. The 900MHz spectrum allows for non-line-of-sight applications where obstructions such as buildings and trees are present.

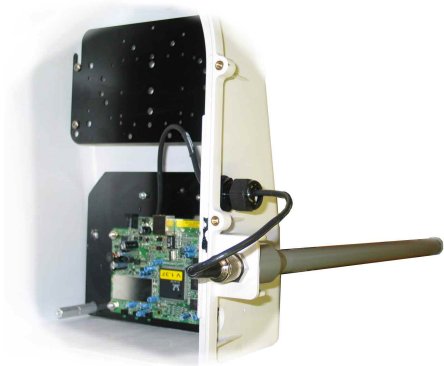
#### **Cost Effective**

Compared to fiber, cable or trenching, the enclosure is a real cost saver, especially in labor. Let us show you how much you can save.

#### **COOLDOME™ and Ring-of-Fire Ready**

The 900MHz Sidekick Wireless D2 is fully compatible with our COOLDOME™ hot weather protection system and cold weather Ring-of-Fire™. Visit [dotworkz.com](http://dotworkz.com) for more details on these performance-enhancing systems.

- IP and analog PTZ camera compatible (analog camera requires a digital decoder, sold separately)
- Upper and lower camera mounting locations
- Assorted standoffs included for that perfect fit
- Compatible with 99% of PTZ cameras
- Water and air tight - perfect for harsh environments
- Will not rust or corrode
- Shock resistant
- IP68 Ports
- Onboard component mounting space for:
  - Routers
  - Cell networks
  - Hard drives
  - UPS
  - WiMAX
  - Mesh hardware
- Onboard antennae mounting tab
- Heavy-duty lower lens for impact resistance
- Lenses available in Smoke and Clear



The D2's simple design is compatible with 99% of IP and analog PTZ cameras including models from Axis, Sony, Toshiba, Canon and many more



The 900MHz Sidekick Wireless D2 package is supplied with:

- D2 camera enclosure
- Vari-fit camera bracket
- Wireless 900MHz transceiver
- 5dBi omni-directional 900 MHz antenna
- Camera ready power leads for 12VDC cameras



1. Impact and scratch-resistant lens available in both clear and smoke with best clarity ratings in the industry
2. Antenna mount
3. Standard mounting to wall or pole (Vari-fit Universal Bracket)
4. Component bay for routers, cell networks, UPS, hard drives, WiMAX, mesh hardware
5. Thermoplastic alloy construction is vandal tough and UV resistant
6. IP66 and NEMA 4X Certified

**Mechanical Size**

Dimensions (L x W x H)	14.9" x 11.7" x 13.2" (378.5mm x 297.2mm x 335.3mm)
Weight (enclosure)	8 lbs (3.6 kg)
Construction	
Enclosure	Thermo Plastic Compound
Lens	High Impact Acrylic, .125" Thickness (3.175mm)
Power Cable Length	5 feet (1.524 meters)

**Wireless 900MHz "Non-Line-of-Sight"**

Type	Avalan Wireless 900T module
Frequency	900MHz
RF Transmission Rate	1.5 Mbps
Range (w Line of Sight)	40 miles Line of Sight with 15 dBi antennae

**Electrical**

Power	
Power Source	12 VDC, 24VAC, 110 VAC, 220 VAC
AC Frequency	47-63 Hz
Input Current	1.2 A @ 110 VAC max. Including camera

**D2 Configurations**

**Part Numbers**

Standard Housing	D2-ST
Heater/Blower Housing	D2-HB
Ring of Fire Housing	D2-RF
COOLDOME™ Housing	D2-CD
Tornado Housing	D2-TR
Side Kick 2.4GHz Housing	CE-0925
Side Kick 900MGz Housing	CE-0926
Dome Cleaner Kit (sold seperately)	AC-0928