

AW-D900 / AW-H900 Wireless Housings

Simple. Powerful. Affordable.

900MHz

AvaLAN
WIRELESS

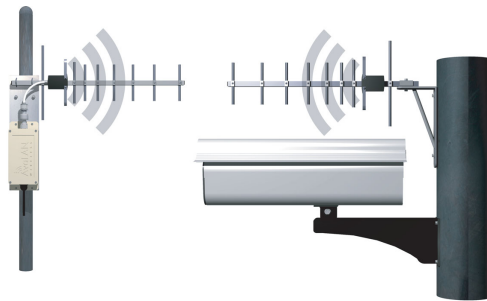
(866) 533-6216

The definitive integrated 900 MHz **NON-line-of-sight** wireless housings for network cameras.

The AW-D900 and AW-H900 replace costly cables and trenching with a Non-Line-of-Sight Wireless Network Camera housing that enables remote network cameras. AvaLAN's product offers the ideal combination of price, penetrating range, data rate, security, interference avoidance, Quality-of-Service and Ease-of-Use.



*Shown with optional AW10 antennae purchased separately.



*Shown with optional AW11 antennae purchased separately.

AW-D900 Kit - \$1,499 (MSRP)

Integrated 900 MHz wireless dome housing for PTZ network cameras. Kit includes:

- (1) Videolarm (FDW75C2N) outdoor dome housing with heater/blower
- (1) AW900x 900 MHz radio transceiver
- (2) 120VAC to 24VAC/40Va transformers
- (2) AW2 2dBi omni antennae
- (1) 120-240VAC to 9VDC power supply
- (1) 30ft outdoor grade CAT5 cable
- (1) POE (Power over Ethernet) injector
- (1) AW900x pole/wall mounting kit

AW-H900 Kit - \$1,399 (MSRP)

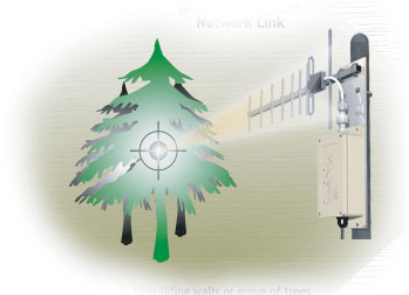
Integrated 900 MHz wireless dome housing for fixed network cameras. Kit includes:

- (1) Videolarm (ACH313) outdoor housing with heater/blower
- (1) AW900x 900 MHz radio transceiver
- (1) 120VAC to 24VAC/40Va transformers
- (2) AW2 2dBi omni antennae
- (1) 120-240VAC to 9VDC power supply
- (1) 30ft outdoor grade CAT5 cable
- (1) POE (Power over Ethernet) injector
- (1) AW900x pole/wall mounting kit

Features:

- High RF output power and exceptional receive sensitivity provides ultra long range wireless IP Digital Video delivery up to 40 miles line-of-sight or 10 walls / grove of trees for NON-line-of-sight applications.
- Does not interfere with Wi-Fi networks.
- 128bit encrypted with dynamic private keys
- Highest Quality of Service (QoS) available - Synchronous point to point protocol enables IP video applications that require low data latency and jitter.
- Simple plug and play - pre-configured as matched pairs with no user programming required.
- 12 non-overlapping channels with frequency agility to avoid interference.
- Operates in the 902 - 928 MHz band and does not require a license to operate or install in USA or Canada.

For a list of network cameras supported, please visit:
<http://www.avalanwireless.com/NetworkCameras.htm>



©2004 - 2006 Avalan Wireless Systems Incorporated. All rights reserved. Avalan Wireless and the Avalan Wireless logo are registered trademarks of Avalan Wireless Systems Incorporated. All other trademarks are property of their respective owners. Avalan Wireless makes no representations or warranties with respect to the accuracy, utility, or completeness of the contents of this publication and reserves the right to make changes to specifications and product descriptions at any time without notice. No license, express or implied, by estoppel or otherwise, to any patents or other intellectual property rights is granted by this document. Particular uses or applications may invalidate some of the specifications and/or product descriptions contained herein. The customer is urged to perform its own engineering review before deciding on a particular application. Avalan Wireless products are not designed for use in medical, life saving, or life sustaining applications. 08.18.2006



Designed, manufactured & assembled in the USA.

Copyright 2004 - 2006 AvaLAN Wireless Systems Inc. All rights reserved.

www.avalanwireless.com
(866) 533-6216

Installation:

NON-Line-of-Sight Range:

With AW2 Antenna:
600 ft. / 2 Trees
With AW10 / AW11 Ant.:
1200 ft. / 3 Trees
With AW15 Antenna:
1500 ft. / 3 Trees



POWER REQUIRED:

- 110 VAC or
- 9 to 48 VDC or
- 24 VAC

POWER REQUIRED:

- 24 VAC

Technical Specifications:

Characteristic	Specification - description (typical)
RF transmission rate:	1.536 Mb/s
Throughput:	935 Kb/s
Output power:	+21dBm - (4 Watts EIRP with 15dBi antennae)
Receive sensitivity:	-97dBm at 10e-4 BER (-112dBm with 15dBi antennae)
Latency:	< 2ms - assuming a dedicated wireless link to client device.
Jitter:	±0.5ms - depending upon packet size, interference and SNR.
Voltage Range: AW-900x AW-D900	9-48VDC 24VAC
Power Consumption: AW-900x AW-D900	TX 1.3Watts and RX 0.6Watts over 9-48VDC input voltage. 55Watts (including 20 watt heater)
Radio channels:	12 Non-overlapping
Automatic frequency select:	Yes - radio channel automatically selected and adaptively optimized
Manual frequency mode:	Yes
Status LEDs:	Power, RF Link, Ethernet Link, Traffic, RF RX, RF TX, 4/Channel and 6/Link Quality
Error correction technique:	Sub-block error detection and retransmission
Adjacent-band rejection:	SAW receiver filter attenuates cellular and pager interference.
Temperature range: AW-900x AW-D900	-40°C to 70°C -30°C to 50°C - Depends upon temp range of Camera Heater turn on at 10°C off at 27°C, Blower on at 45°C off at 27°C
AW-900x receiver - Power over Ethernet:	Includes injectors/power supplies - 802.3af compliant. Use with 9VDC to 48VDC POE systems with lines 4/5 positive, 7/8 ground.

Ordering Information:

Part	Price	Description	Contents
AW-D900	MSRP \$1,499	Integrated 900 MHz Wireless Dome Housing Kit for PTZ IP Cameras	Please See Above.
AW-H900	MSRP \$1,399	Integrated 900 MHz Wireless Housing Kit for Fixed IP Cameras	Please See Above.



Designed, manufactured & assembled in the USA.

Copyright 2004 - 2006 AvaLAN Wireless Systems Inc. All rights reserved.

www.avalanwireless.com
(866) 533-6216