

Optimized to meet the environmental challenges of severe climate applications

The revolutionary D2 environmental housing resets the standard, providing heavy-duty protection for PTZ cameras from the rigors of outdoor exposure, vandalism and physical damage.

DOTWORKZ D2 CAMERA ENCLOSURES

D2 Standard



D2 Heater Blower



D2 Tornado



D2 Ring-of-Fire



D2 COOLDOME



STATIC CAMERA ENCLOSURES

Ring-of-Fire



COOLDOME



Heater-Blower



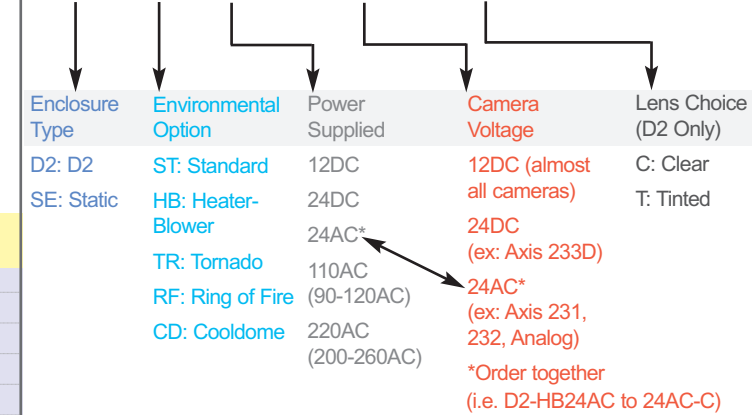
Tornado



Enclosure Ordering Product Code

Example of Product Code

D2-HB110AC to 12DC-C



Model Number	D2-ST	D2-HB SERIES	D2-TR SERIES	D2-RF SERIES	D2-CD SERIES
IP PTZ Camera Support	Yes	Yes	Yes	Yes	Yes
Analog PTZ Camera Support	Yes (may require modification)	Yes (may require modification)	Yes (may require modification)	Yes (may require modification)	Yes (may require modification)
IP Fixed Camera Support	No	No	No	No	No
Analog Fixed Camera Support	No	No	No	No	No
Mount Type	Integrated Wall Mount	Integrated Wall Mount	Integrated Wall Mount	Integrated Wall Mount	Integrated Wall Mount
ENVIRONMENTAL					
Operating Temperature	30°F to 95°F (-1°C to 35°C)	15°F to 105°F (-9°C to 41°C)	30°F to 110°F (-1°C to 43°C)	-40°F to 100°F (-40°C to 35°C)	30°F to 145°F (-1°C to 63°C)
Heating Element Activates	NA	45°F (7°C)	NA	De-icing Element on at 45°F (7°C)	NA
Heating Element Deactivates	NA	65°F (18°C)	NA	De-icing Element off at 60°F (15°C)	NA
Cooling Element Activates	NA	Blower always on	Blower always on	Blower always on	100°F (38°C)
Cooling Element Deactivates	NA	Blower always on	Blower always on	Blower always on	70°F (21°C)
Operating Humidity	Up to 100%	Up to 100%	Up to 100%	Up to 100%	Up to 100%
INTERNAL ENVIRONMENTAL CONTROLS					
Active Systems Thermostatically Controlled	NA	NA	Passive	Active Heating: 65 watt Ring of Fire	Active Cooling
Cooling and Heating	NA	NA	NA	Active Heating/Fan Cooling	Active Cooling, Q = 120 watt/408btu w/fan
Internal Fan(s) included (Quantity, Size, Output)	NA	(1) 50 x 50 x 50mm, 10 cfm	(2) 50 x 50 x 50mm, 2 x 10 cfm = 20cfm	(2) 50 x 50 x 50mm, 2 x 10 cfm = 20cfm	(1) 80 x 80 x 15mm, 42 cfm
Solar Guard Insulation Kit	Available, Sold Separately	Available, Sold Separately	Dual Ply, Solar guard insulation kit installed	Not advisable	Dual Ply, Solar guard insulation kit installed
Humidity Control Package	Available, Sold Separately	Available, Sold Separately	Available, Sold Separately	Available, Sold Separately	Included as Standard with Cool Dome
ELECTRICAL					
Power Consumption	NA	2 amps @ 115 VAC typical at full load	2 amps @ 115 VAC typical at full load	3 amps @ 115 VAC typical @ full load	12V, 150W @ enclosure typical @ full load
Power Source options	NA	12 VDC, 24VAC, 110 VAC, or 220 VAC	12 VDC, 24VAC, 110 VAC, or 220 VAC	12 VDC, 24VAC, 110 VAC, or 220 VAC	110 VAC/ 220 VAC manually switched w/12 VDC
Internal Power Available for Camera	NA	4 amps @ 12 VDC on typical model	4 amps @ 12 VDC on typical model	4 amps @ 12 VDC	2 amps @ 12 VDC
AC Frequency	NA	47-63 Hz	47-63 Hz	47-63 Hz	47-63 Hz
Input Current	NA	2 amps @ 115 VAC max including camera	2 amps @ 115 VAC max including camera	3 amps @ 115 VAC max. Including camera	External P/S, 4.8 amps @ 115 VAC
CONSTRUCTION					
Enclosure Construction	Polycarbonate (Lexan)	Polycarbonate (Lexan)	Polycarbonate (Lexan)	Polycarbonate (Lexan)	Polycarbonate (Lexan)
Lens (colors)	High Impact Acrylic, .0625" (clear or tinted)	High Impact Acrylic, .0625" (clear or tinted)	High Impact Acrylic, .0625" (clear or tinted)	High Impact Acrylic, .0625" (clear or tinted)	High Impact Acrylic, .0625" (clear or tinted)
NEMA 4X Certified	Yes	Yes	Yes	Yes	Yes
Shipping Dimensions	13" x 12.5" x 15"	13" x 12.5" x 15"	13" x 12.5" x 15"	13" x 12.5" x 15"	13" x 12.5" x 19"
Shipping Weight	9 lbs (4.08 kg)	11 lbs (5.0 kg)	11 lbs (5.0 kg)	11 lbs (5.0 kg)	15 lbs (6.8 kg)
ACCESSORIES (optional)					
	Dotworkz Pole Mount Adapter (BR-MPM1)	Dotworkz Pole Mount Adapter (BR-MPM1)	Dotworkz Pole Mount Adapter (BR-MPM1)	Dotworkz Pole Mount Adapter (BR-MPM1)	Dotworkz Pole Mount Adapter (BR-MPM1)
	Tilt Angle Correction Plate (BR-MPM1-AC)	Tilt Angle Correction Plate (BR-MPM1-AC)	Tilt Angle Correction Plate (BR-MPM1-AC)	Tilt Angle Correction Plate (BR-MPM1-AC)	Tilt Angle Correction Plate (BR-MPM1-AC)
	Integrated Wireless 900MHz (AW-D2-900)	Integrated Wireless 900MHz (AW-D2-900)	Integrated Wireless 900MHz (AW-D2-900)	Integrated Wireless 900MHz (AW-D2-900)	Integrated Wireless 900MHz (AW-D2-900)
	Integrated Wireless 2.4GHz (SK-D2-2.4)	Integrated Wireless 2.4GHz (SK-D2-2.4)	Integrated Wireless 2.4GHz (SK-D2-2.4)	Integrated Wireless 2.4GHz (SK-D2-2.4)	Integrated Wireless 2.4GHz (SK-D2-2.4)
	Integrated Wireless 5.8GHz (AW-D2-5.8)	Integrated Wireless 5.8GHz (AW-D2-5.8)	Integrated Wireless 5.8GHz (AW-D2-5.8)	Integrated Wireless 5.8GHz (AW-D2-5.8)	Integrated Wireless 5.8GHz (AW-D2-5.8)

SE-RF SERIES	SE-CD SERIES	SE-HB SERIES	SE-TR SERIES
No	No	No	No
No	No	No	No
Yes	Yes	Yes	Yes
Yes	Yes	Yes	Yes
Arm for wall mount & pole mount (2.5" dia.)	Arm for wall mount & pole mount (2.5" dia.)	Arm for wall mount & pole mount (2.5" dia.)	Arm for wall mount & pole mount (2.5" dia.)
-40° F to 105°F (-40°C to 41°C)	40° F to 145° F (40°C to 63°C)	15° F (9° C) to 108° F (43° C)	30 F to 110 F (-1C to 43C)
45°F (+7°C)	NA	40° F (7° C)	NA
60°F (+15°C)	NA	60° F (15° C)	NA
Blower always on	100°F (38°C)	Blower always on	Blower always on
Blower always on	70°F (21°C)	Blower always on	Blower always on
Up to 100% (when sealed)	Up to 100% (when sealed)	Up to 100% (when sealed)	Up to 100% (when sealed)
Active Heating: 65 watt Ring of Fire	Active Cooling	Heater System, Active Cooling	Active Cooling
Active Heating/Fan Cooling	Active Cooling: Q= 69 watts/233btu w/fan	Dual Blower (always on), Heating: 25 watts	Dual Blower (always on)
(1) 60 x 60 x 10mm, 18.6 cfm	(2) 40 x 40 x 10mm, 2 x 5cfm = 10 cfm	(2) 40 x 40 x 10mm = 10 cfm	(2) 40 x 40 x 10mm = 10 cfm
Not advised	Standard Single Ply Included	Standard Single Ply Included	Integrated Dual Ply Included
Available, sold separately	Included as Standard with Cool Dome	Available, sold separately	Available, sold separately
1.2 amps @ 115 VAC typical @ full load	12 VDC, 100W @ typical @ full load	42W @ 24C, 77w @ 110 VAC, 88W @ 220 VAC	42W @ 24V, 77W @ 110 VAC, 88W @ 220 VAC
24 VAC/VDC, 110 VAC, or 220 VAC	110 VAC/ 220 VAC manual w/12 VDC	24 VAC/VDC, 110/220 VAC	24 VAC/VDC, 110/220 VAC
2 amps @ 12 VDC	2 amps @ 12 VDC	1.3 amps @ 12 VDC	1.3 amps @ 12 VDC
47-63 Hz	47-63 Hz	47-63 Hz	47-63 Hz
1.3 amps typ @ 115 VAC w/ Heater on	4.8 amps typ @ 115VAC, 2.8 @ 230VAC	1.75A @ 24VDC, 0.7A @ 110VAC, 0.4A @ 220VAC	1.75A @ 24VDC, 0.7A @ 110VAC, 0.4A @ 220VAC
Two extruded aluminum (.08") white finish	Two extruded aluminum (.08") white finish	Two extruded aluminum (.08") white finish	Two extruded aluminum (.08") white finish
High Impact Glass, .0625" (clear)	High Impact Glass, .0625" (clear)	High Impact Glass, .0625" (clear)	High Impact Glass, .0625" (clear)
--	--	--	--
20" x 10" x 6"	20" x 10" x 8"	20" x 10" x 6"	20" x 10" x 6"
9 lbs (4.08 kg)	11 lbs (5.0 kg)	9 lbs (4.08 kg)	9 lbs (4.08 kg)
		Humidity control package	

Dotworkz D2 Features

- IP and analog PTZ camera compatible
- Vari-Fit internal bracket included for perfect fit
- Impact resistant Polycarbonate Thermoplastic
- IP66 rated against dust, water, and salt water air
- IP68 (water proof) connection ports
- Will not rust or corrode
- Shock resistant
- Onboard component mounting space for:
 - Routers
 - Cell networks
 - Hard drives
 - UPS
 - WiMAX
 - Mesh hardware
- Onboard antenna mounting tab
- Heavy-duty lower lens for impact resistance

Enclosures

DOTWORKZ ENCLOSURES ACCESSORIES

DOME CLEANER

D2 LENS REPLACEMENT

D2 ACCESSORY PLATE

POLE MOUNT ADAPTER

CORRECTION PLATE

ADDITIONAL BRACKETS


AC-0929

The DomeWizard™ revolutionizes the maintenance of security cameras. By keeping lenses sparkling clean, it improves the overall lowlight performance of video systems while increasing safety for your maintenance personnel - no ladders or lifts needed. (ship 16" x 6" x 6" = 3 lbs, 85" x 6" x 4" = 10 lbs)

Dotworkz Dome Cleaner Package

1. DomeWizard Cleaning Head
2. 8 oz Rexton Cleaning Solution
3. Dotworkz Replacement Mitt 3-Pack
4. Extension Pole 6' extending to 30'


AC-0940

Lens replacements for Dotworkz D2 camera enclosures. Available in clear or tinted lens designs. Both are heavy duty acrylic plastic for increased scratch resistance. (ship 9" x 9" x 9" = 1 lbs)

Features

- Clear lens improves night time viewing by 1-f stop
- Tinted lens improves daytime viewing in bright conditions and increases camera privacy


AC-0942

The AC-0942 is an accessory component mounting plate especially designed for the Dotworkz D2 camera enclosure. The AC-0942 allows you to securely install custom components within the D2's cargo bay to enable such applications as Wireless, Mesh, WiMax, onboard NVR and more. (ship: 7.25" x 12" padded envelope)


BR-MPM1

Dotworkz EZ Lock™ Pole Mount Adapter is a feature rich mounting adapter. Easily secures to poles with a minimum of 3/4" diameter. (ship: 8.5" x 8" x 2.5" = 3 lbs)

Additional Components

Angle Correction Plate: Corrects up to 10 degrees of angle. (BR-MPM1AC)

Antenna Mount: The Dotworkz antenna mount provides additional antenna mount locations, allowing for easy application of ingress/egress omni antennas. Mounting off of the EZ Lock Pole mount allows for installation without drilling into existing pole.


BR-MPM1AC

Dotworkz EZ Lock™ Correction Plate works with EZ Lock Pole Mount Adapter. It employs a tilt-and-locking mechanism to enable the positioning of cameras at the exact viewing angle needed to compensate for slanted poles or walls. (ship: 9" x 9" x 3" = 2 lbs)

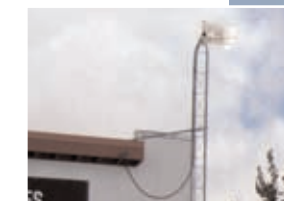
Features

- Industrial grade steel
- Tilt-and-Lock Mechanism


AVAILABLE UPON REQUEST

The **BR-1111** is a corner/wall rotating bracket that secures directly to the corner of a building so the camera can be serviced by rotating the unit back in over the roof. It features a powder coat finish, heavy-gauge steel construction, and 150 lb load rating.

The **BR-1102** is a corner mount adapter designed to work with the Dotworkz D2 enclosure. It features durable a powder coat finish, all aluminum construction, threaded bold inserts, and 75 lb load rating.



Dotworkz equipment has been deployed in police, government, military, corporate, educational and other demanding applications

Dotworkz Systems, Inc.
3688 Midway Drive
San Diego, CA 92110

Phone: 866.575.4689
Outside USA: 619.224.5483
www.dotworkz.com



There are many ways to buy Dotworkz products, based on the type of customer you are.

Authorized Retailers: If you are an end user, you can go to the Dotworkz Authorized Retailers list to find a retailer in your region. To find retailers go to www.dotworkz.com and click on Customer Service.

Authorized Distributors: If you are a reseller or a systems integrator, you can search for a distributor on the Dotworkz Authorized Distributor page. To find distributors go to www.dotworkz.com and click on Customer Service.

Presales Support: If you have a question you would like answered before buying Please call 866.575.4689, Fax 619.639.9914.

Dotworkz Store: The Dotworkz Store features a rich selection of Dotworkz branded IP video surveillance solutions. Visit Dotworkz Store at estore.dotworkz.com.

For more information on how to become a Dotworkz partner please go to <http://www.dotworkz.com> and click on Contact Us. A company representative will contact you.