



**ProCurve**  
Networking by HP

Network of Choice

**riverbed**

Think fast.™



Alliance solution  
brief

## HP ProCurve and Riverbed Technology Alliance

Riverbed WAN optimization

Accelerating  
applications for the  
global workforce

### The challenge

Workers need access to information wherever and whenever they work—whether at corporate headquarters, a branch office on another continent, or onsite with a customer. The demand for access to data from multiple geographically distant locations and devices puts tremendous strain on IT to deliver an increasing number of applications over the WAN without jeopardizing

performance. At the same time, IT departments are being asked to deliver more with less resources.

With a distributed workforce, the IT challenge of maximizing business performance has become even more complex. IT is forced to make a difficult choice: support a massive, distributed IT infrastructure, or just let employees suffer with poor performance across the WAN.

## How HP ProCurve and Riverbed help you meet the challenge

The HP ProCurve Open Network Ecosystem (ONE) provides an open networking platform to make sure only tested and certified applications are able to run on your network and help you get the security you need for your network. ProCurve ONE delivers a choice of applications—so you get the most business value from your network.

Using WAN optimization solutions from Riverbed, enterprises may experience a significant improvement in application performance. These dramatic results allow businesses to take advantage of their networks, infrastructure, and applications in ways they had never imagined possible.

Riverbed helps enterprises across different verticals optimize their WAN networks for performance and utilization. Riverbed delivers a comprehensive solution for WAN optimization by addressing key factors that slow application performance over WANs: network, application, and storage limitations. Riverbed solutions allow companies to connect their data centers, remote offices, and mobile workers with higher network speeds.

Steelhead® appliances deliver LAN-like performance for applications over WANs, allowing geographically dispersed teams to share documents and data as if they were all working in the same office, while allowing the effective consolidation and protection of IT infrastructure and data. Steelhead Mobile software accomplishes the same goals for mobile workers who need the same fast performance from their laptop computers wherever they are.

The acceleration of Exchange, Windows®, FTP, HTTP, Web applications, Lotus Notes, Microsoft® SQL, and other key business applications can speed up collaboration and productivity for organizations of all sizes—from the global enterprise to the smallest of startups with just one office, IT architects now have the freedom to consolidate IT infrastructures like file servers,

e-mail servers, network-attached storage, and tape libraries from remote offices to data centers without degrading performance for their end users. Successful site consolidation can save money on IT operating expenses.

In addition, the elimination of redundant network traffic may help to reduce bandwidth utilization. This allows network managers to delay or avoid expensive bandwidth upgrades, de-provision some of their current bandwidth, or roll out new bandwidth-intensive applications like VoIP or video. As for business continuity, organizations can now quickly and securely back up and replicate data across long distances much faster than before. Riverbed WAN optimization solutions can help reduce the need for frequent backup windows.

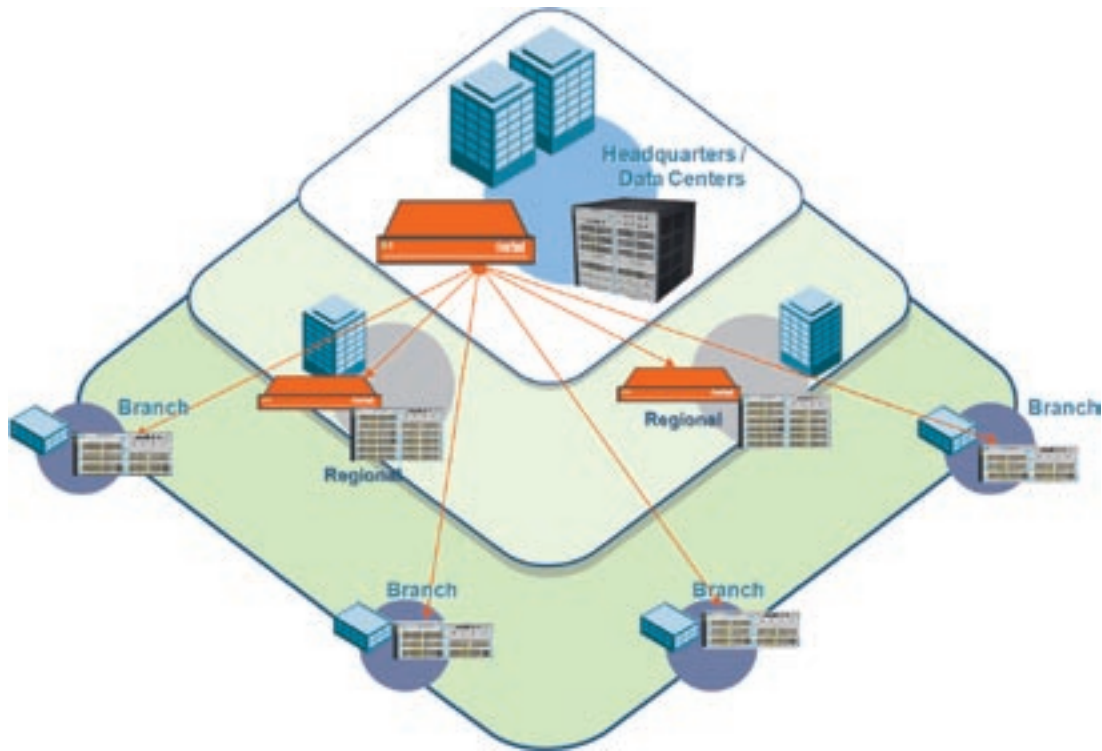
Combining Riverbed WAN optimization and acceleration solutions with reliable HP ProCurve switching infrastructure, ProCurve ONE provides customers with a rock-solid solution for distributed enterprise environments.

### Solution features

- Delivers a scalable solution that meets the needs of branch offices of any size
- Gives headquarters and larger branch offices dedicated appliances of varying sizes
- Offers very attractive price and performance solution for WAN optimization and switching

### Solution benefits

- **Optimize WAN bandwidth usage and LAN infrastructure:** Riverbed WAN optimization helps organizations reduce WAN traffic and may reduce corporate WAN traffic. UDP traffic can be prioritized in two ways—by bandwidth and by latency sensitivity.
- **Make more room for business-critical network applications:** Deploying Steelhead appliances and software on the WAN allows for bandwidth availability for other business-critical applications.



- **Improve throughput for “LFNs” and “Lossy” networks:** For high-bandwidth links sometimes known as Long Fat Networks (“LFNs”) and lossy networks, link quality to network congestion limits performance. Riverbed’s advanced TCP acceleration algorithms can help improve throughput on a single TCP connection.
- **Reduce complexity of network management:** Server consolidation simplifies onsite maintenance for patch management, backups, restores, and repairs.
- **Increase efficiency:** Consolidating lightly utilized distributed servers may result in both hardware and software cost savings.
- **Improve compliance:** When data and IT are consolidated, organizations can more easily meet local, federal, and organizational compliance standards for information security.

## Solution components

### HP ProCurve chassis

- HP ProCurve Switch 5406zl
- HP ProCurve Switch 5412zl
- HP ProCurve Switch 8212zl

### Riverbed

- **Steelhead appliances:** Powered by the Riverbed Optimization System (RiOS), Steelhead appliances optimize bandwidth utilization and accelerate applications to provide users with LAN-like performance across distributed environments.
- **Central Management Console (CMC):** Turnkey solution for centrally managing Steelhead appliances distributed across enterprise networks.
- **Steelhead Mobile Software Client:** Delivers accelerated application performance to the mobile workforce.
- **Interceptor 9200:** Delivers a scalable solution for Steelhead appliance deployments on WANs where line-rate performance is critical.



- **Professional services**
  - **Riverbed Steelhead Jumpstart**  
**Service**—Experienced consultants help you plan, deploy, configure, and test the Riverbed Steelhead solution.
  - **Riverbed Steelhead Health Check**  
**Service**—proactive diagnosis of the health of your Steelhead deployment to identify potential issues and provide recommendations
  - **Daily, part-time, or full-time consulting services**—flexible options to serve customer needs for WAN optimization

### Why HP ProCurve and Riverbed?

HP ProCurve is the Network of Choice for best-in-class solutions, products, and services for wired and wireless networks. ProCurve's Adaptive Networks vision offers the flexibility to deliver secure, standards-based solutions—helping to optimize the business value of networks by fortifying security, reducing complexity, and increasing productivity. Through the HP ProCurve Open Network Ecosystem (ONE), ProCurve delivers a choice of standards-based solutions.

Riverbed is a performance leader in wide-area data service (WAN optimization) solutions. By enabling application performance over the WAN,

Riverbed has developed an easy-to-use, easy-to-deploy appliance that can accelerate the performance of key enterprise applications across distributed environments.

### What is HP ProCurve ONE?

Businesses are continually seeking ways to improve competitiveness and manage costs. You need to enable new applications to support the business while addressing cost and network complexity. Today, you're forced to choose between integrating multiple appliances through open standards or being limited to a sub-optimal end-to-end solution from a single vendor.

HP ProCurve's Open Network Ecosystem (ProCurve ONE) allows you to choose from a selection of market-leading applications and to integrate them with your network, having the confidence that the solution has already been pre-tested. Should you run into an unforeseen problem, ProCurve's support team can provide fault-isolation assistance, and in the case of complex interactions will work closely with our alliance partner to isolate the cause of an issue and propose a resolution plan.

To find out more about the HP ProCurve Open Network Ecosystem, visit [www.procurve.com/one](http://www.procurve.com/one)

### For more information

To learn more about HP ProCurve Networking, please visit [ProCurve.com](http://ProCurve.com)

To learn more about Riverbed Technologies, please visit [www.riverbed.com](http://www.riverbed.com)

© Copyright 2009 Hewlett-Packard Development Company, L.P. The information contained herein is subject to change without notice. The only warranties for HP products and services are set forth in the express warranty statements accompanying such products and services. Nothing herein should be construed as constituting an additional warranty. HP shall not be liable for technical or editorial errors or omissions contained herein.

4AA2-4172ENW, January 2009

