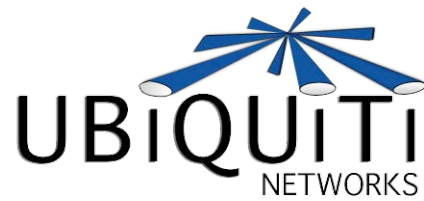


SuperRange by Ubiquiti.

High performance 802.11 cards.



HI-POWER

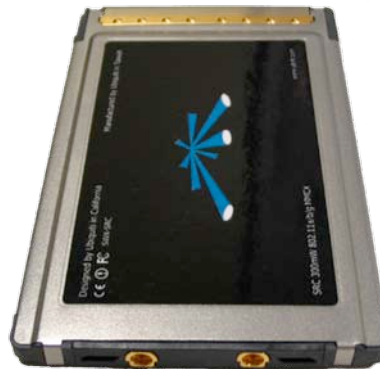
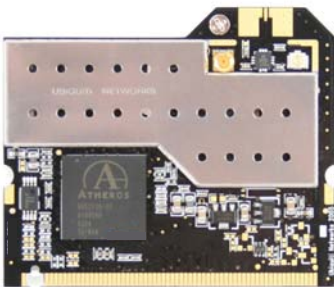
SUPER SENSITIVITY

MODULAR

SuperRange modular cards from Ubiquiti can boost link gains up to 20dB compared to conventional 802.11 cards. With a patent-pending modular, integrated bi-directional amplification system, Super Range cards produce optimum performance results in outdoor wireless links without the added cost and complications of external amplifiers.

SuperRange2

400mW, Super RX Sensitivity @2.4GHz



SuperRange5

400mW, Super RX Sensitivity @5GHz



SuperRangeCardbus

300mW a/b/g, External Antenna Options

SuperRange2

Chipset

MAC/BB Atheros 5004, AR5213
RF AR2112 + Ubiquiti RF Front End

Radio Performance

TX Power 26dBm, +/-1dB
RX Sensitivity -97dBm, +/- 2dB
Standard 802.11b/g
Antenna Ports u.fl, MMCX, SMA (optional)

Software Support



GENERAL

Power Consumption 3.3V x 1200mA (worst case)
Heat sink Integrated on back-side
Environmental -40C to +60C
FCCID SWX-SR2

Chipset

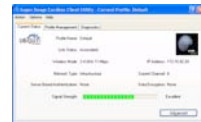
MAC/BB Atheros 5004, AR5213
RF AR5112 + Ubiquiti RF Front End

Radio Performance

TX Power 24.5dBm, +/-1dB
RX Sensitivity -96dBm, +/- 2dB
Standard 802.11a/b/g
Antenna Ports MMCX X2

GENERAL

Power Consumption 3.3V x 800mA (worst case)
Environmental -40C to +60C
FCCID SWX-SRC



WinXP
Driver/Utility



SuperRange5

Chipset

MAC/BB Atheros 5004, AR5213
RF AR5112 + Ubiquiti RF Front End

Radio Performance

TX Power 26dBm, +/-1dB
RX Sensitivity -93dBm, +/- 2dB
Standard 802.11a
Antenna Ports u.fl, MMCX, SMA (optional)

Software Support



GENERAL

Power Consumption 3.3V x 1300mA (worst case)
Heat sink Integrated on back-side
Environmental -40C to +60C
FCCID SWX-SR5

