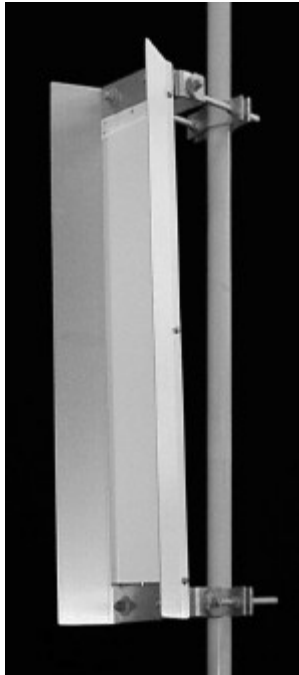


TA-1404-40 Sector

1425-1535 MHz



The TA-1404-40 is a vertically polarized 40 degree sectoral antenna. The antenna consists of a broadband dipole array enclosed in an aluminum cavity with a UV stabilized ASA radome for superior weatherability. The antenna is at DC ground to aid in lightning protection.

Electrical Specifications

Frequency Range: 1425-1535 MHz
Gain: 16.5 dBi
VSWR: 1.5:1 max.
Front to Back Ratio: 20 dB min. 25 typical
Polarization: Vertical
Power Rating: 250 Watts
H-Plane Beamwidth: 40 degrees
E-Plane Beamwidth: 16 degrees
Electrical Downtilt: 0, 2, 4, 6 degrees
Cross Pol. Discrimination: 20 dB min.
Impedance: 50 ohms nominal
Termination: N female (7/16 optional)

Typical mid band values. (For details , contact factory)
 Specifications subject to change without notice

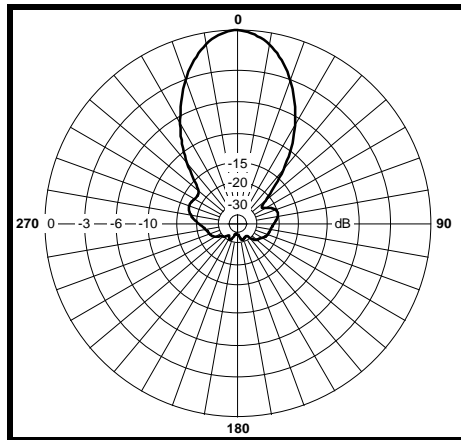
Mechanical Specifications

Length: 40 in. (1016 mm)
Width: 11.5 in. (292 mm)
Depth: 6 in. (152 mm)
Weight (incl. Clamps): 25 lb. (11.4 kg)
Rated Wind Velocity: 125 mph (200 km/h)
Hor. Thrust at rated wind: 199 lb. (90 kg)
Mechanical Tilt: 0 - 15 degrees (optional)
Mounting (O.D.): 1.75 - 4.0 in. (44.5 - 102 mm)

Materials

Radiating Elements: Irridited aluminum
Reflector: Irridited aluminum
Radome: Gray UV stabilized ASA
Clamps: HDG steel

H-Plane



E-Plane

