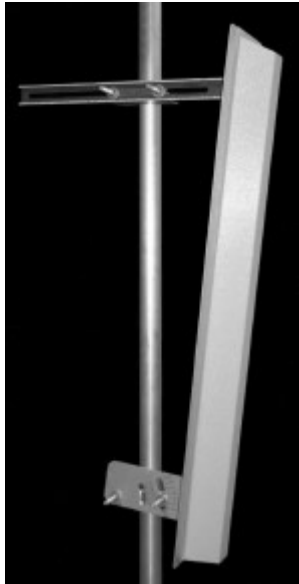


TA-2505H-8-90 Sector

2500-2700 MHz



The TA-2505H-8-90 is a medium-gain horizontally polarized 90 degree sectoral antenna. It consists of a linear dipole array with fixed side panels to achieve the correct beamwidth. Radiating elements are protected by a weatherproof radome for operation under severe weather conditions and are at DC ground to aid in lightning protection.

Electrical Specifications

Frequency Range: 2500-2700 MHz
Gain: 14.5 dBi
VSWR: 1.5:1 max.
Front to Back Ratio: 19 dB min.
Polarization: Horizontal
Power Rating: 25 Watts
H-Plane Beamwidth: 8 degrees
E-Plane Beamwidth: 90 degrees
Cross Pol. Discrimination: 20 dB @ 90° +/- 5°
Impedance: 50 ohms nominal
Termination: N female

Typical mid band values. (For details , contact factory)
 Specifications subject to change without notice

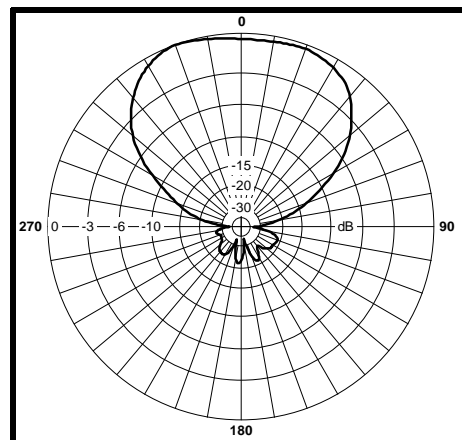
Mechanical Specifications

Length: 39.4 in. (1000 mm)
Width: 8 in. (203 mm)
Depth: 3.75 in. (95 mm)
Weight (incl. Clamps): 9 lb. (4 kg)
Rated Wind Velocity: 125 mph (200 km/h)
Hor. Thrust at rated wind: 84 lb. (38 kg)
Mechanical Tilt: 0 - 10°, 1° increments
Mounting (O.D.): 0.75 - 3.0 in. (19 - 76 mm)

Materials

Radiating Elements: Tin-Plated copper on PCB
Reflector: Irridited aluminum
Radome: Gray UV stabilized ASA
Clamps: Aluminum and HDG steel

E-Plane



H-Plane

