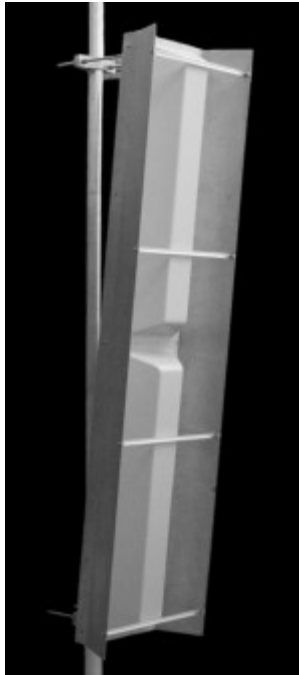


TA-811-45 Sector

806-896, 824-896, 890-960 MHz



The TA-811-45 is a fixed pattern version of the TA-811 adjustable sector. It is enclosed in an aluminum base and has an ASA UV stabilized radome for superior performance and weatherability. Extremely low side lobes and up to 6 degrees of mechanical downtilt make this a remarkably versatile antenna.

Electrical Specifications

Frequency Range: 806-896, 824-896, 890-960 MHz
Gain: 17 dBd @ 45°
VSWR: 1.5:1 max. 1.35:1 typical
Front to Back Ratio: 25 dB min. 30 dB typical
Polarization: Vertical
Power Rating: 500 Watts
H-Plane Beamwidth: 45 degrees
E-Plane Beamwidth: 8.5 degrees
Electrical Downtilt: 0°, 2°, 4°, 5°, 6°, 10°, 13°, 15°
Cross Pol. Discrimination: 20 dB min.
Impedance: 50 ohms nominal
Termination: N female (7/16 optional)

Typical mid band values. (For details , contact factory)
 Specifications subject to change without notice

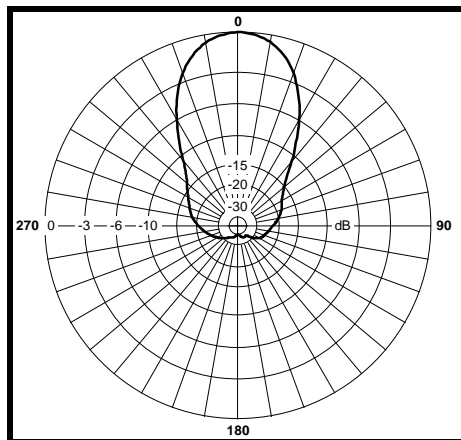
Mechanical Specifications

Length: 96 in. (2438 mm)
Width: 19 in. (483 mm)
Depth: 8.2 in. (208 mm)
Weight (incl. Clamps): 62 lb. (28 kg)
Rated Wind Velocity: 120 mph (193 km/h)
Hor. Thrust at rated wind: 792 lb. (359 kg)
Mechanical Tilt: 0 - 6 degrees
Mounting (O.D.): 1.75 - 4.5 in. (44.5 - 114 mm)

Materials

Radiating Elements: Irridited aluminum
Reflector: Irridited aluminum
Radome: Gray UV stabilized ASA
Clamps: HDG steel

H-Plane



E-Plane

