



FOR WIRELESS THAT WORKS

AIRWAVE WIRELESS MANAGEMENT SUITE

As demand for Wi-Fi accelerates, the burden on IT is increasing. The IT staff is just beginning to realize just how expensive, time consuming, and complex Wi-Fi can be.

To enforce security, maintain control, provide a high QoS, and ensure reliability, IT needs wireless network management tools similar to traditional network management systems- but tuned to the specific needs of wireless networks.

Enter AirWave's Wireless Management Suite: end-to-end management of your Wi-Fi network, from one easy-to-use console. Now, everything IT needs to efficiently and cost-effectively plan, install, manage, and secure wireless networks is in one place.

The AirWave Wireless Management Suite benefits include

Security

- Find and Eliminate Rogues
- Enforce Policies
- Assure Compliance
- Maintain Audit Trails

Wi-Fi ROI

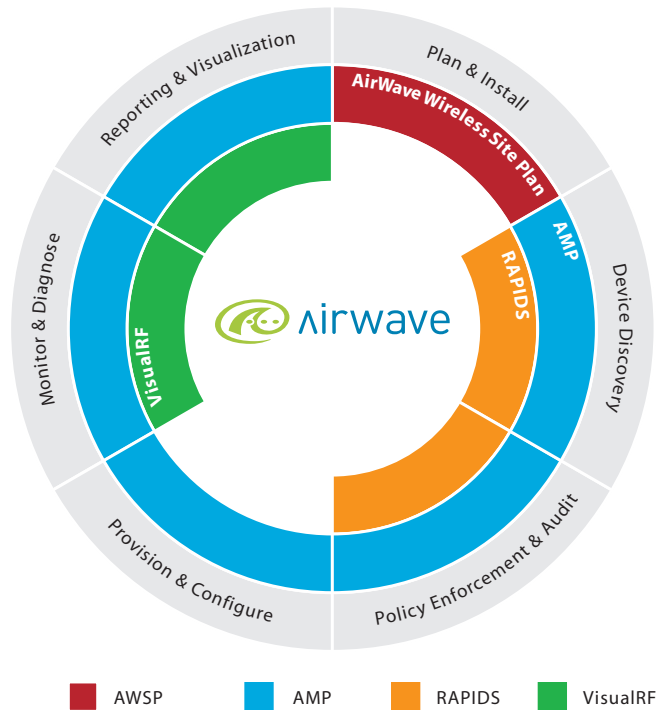
- Enhanced WLAN Performance
- Easy to Use for the Entire Support Staff
- Automate Routine Tasks

Management

- End-to-End Management
- Automatic AP Configuration and Firmware Management
- Control Multi-Vendor & Multi-architecture WLANs
- Plan, Install, Configure, and Manage

Visibility

- See Everything That's Happening on Your Network
- One-Screen Health Check of the Entire Network
- Proactive Problem Resolution
- Rogues Can't Hide
- Extensive Reporting for Intelligent Planning



AIRWAVE SOFTWARE MODULES

AirWave Management Platform (AMP)

The foundation of the AirWave Wireless Management Suite, AMP's intuitive and informative user interface makes it easy to control your wireless LAN

RAPIDS

The Rogue Access Point Intrusion Detection System (RAPIDS) module, uses advanced wireless and wireline discovery to reveal every AP on your network.

AirWave Wireless Site Plan (AWSP)

Get your Wi-Fi installation right the first time. AWSP is a Visio-based application that shows you what coverage you'll get with your APs and helps plan your RF environment intelligently.

VisualRF

Using the site plan you develop in AWSP, VisualRF overlays real-time WLAN data, so you can see exactly what's happening, who's connected, and how the network is performing.

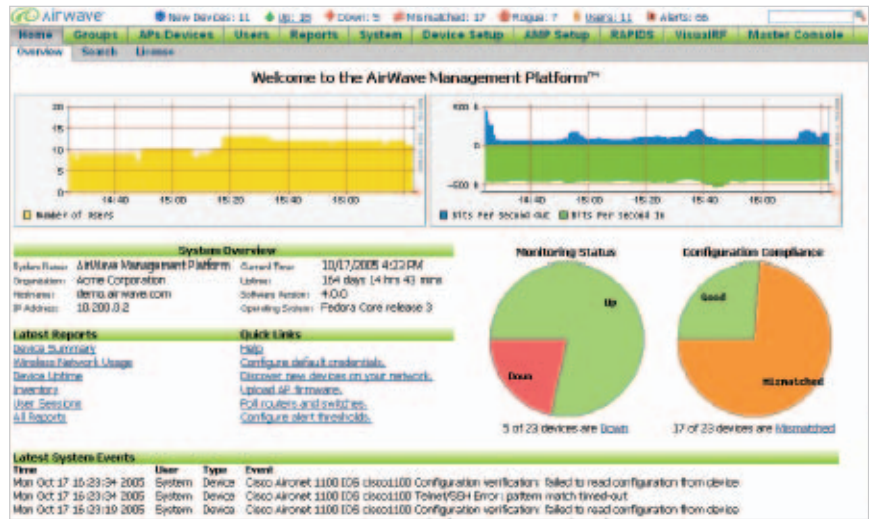
The AirWave Wireless Management Suite consists of the following modules:

AIRWAVE MANAGEMENT PLATFORM (AMP)

AMP makes it easy and efficient to manage your wireless network. By combining industry-leading functionality with an intuitive user interface, AMP helps even network administrators with little or no RF experience to take full control of their Wi-Fi networks.

ROGUE ACCESS POINT INTRUSION DETECTION SYSTEM (RAPIDS)

Secure your organization from one of the most dangerous hazards of Wi-Fi – rogue APs. An add-on to AMP, RAPIDS™ automatically detects and locates unauthorized access points through a combination of RF scanning and wireline “fingerprinting.” RAPIDS is a 100% software solution that uses your existing, authorized APs to scan the RF airspace for any unauthorized devices.



AMP Web-based User Interface: Help Desk View

AIRWAVE WIRELESS SITE PLAN

Effective Wi-Fi management starts with a solid plan. AirWave Wireless Site Plan (AWSP) helps you get your Wi-Fi installation right the first time. AWSP imports any existing drawing and helps you plan where to locate your APs. Using AirWave’s extensive database of APs and their operational parameters, AWSP calculates what kind of coverage you’ll get, so you can eliminate coverage gaps and plan for optimum performance in high-use areas.

VISUALRF

With VisualRF, even your radio waves are now visible. VisualRF takes the map you created with the AirWave Wireless Site Plan and shows you exactly what your RF environment looks like now – in real time, using real data gathered from your active APs.

Using VisualRF you can see exactly who is on your network, where they are, and how the network is performing. Visual RF gives you a bird’s-eye view of your network, allowing you to zoom down into any detail level you want.

AirWave Wireless Inc.
1700 South El Camino Real
Suite 500, San Mateo, CA 94402
Phone: (650) 286-6100
Fax: (650) 286-6101

www.airwave.com
General information: info@airwave.com
Sales: sales@airwave.com
Technical support: support@airwave.com



Overview-001