



FOR WIRELESS THAT WORKS

AIRWAVE WIRELESS SITE PLAN

An accurate site plan is crucial to deploying and effectively managing a Wi-Fi installation. With Airwave Wireless Site Plan (AWSP), designing a site plan for a Wi-Fi network doesn't require an RF engineer. And once it's complete, it won't sit in your drawer gathering dust; it will become a living document that enhances intelligent network planning and accelerates problem resolution. The AWSP software is an easy-to-use, Visio-based software application that helps you quickly create an RF site plan for your facility. Once your site plan is complete, you generate reports for your installers to use as they deploy your wireless access points and other infrastructure. Then, when installation is complete, AWSP synchronizes with the AirWave Management Platform to automatically provision your APs and configure them to match your a plan.

Security

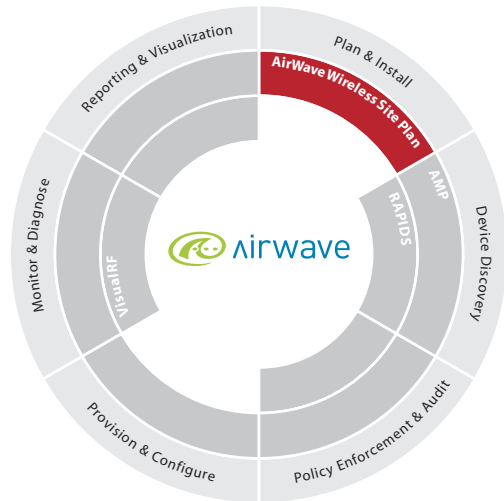
AWSP enhances network security by providing a clear, up-to-date record of the location of all wireless devices for your auditors and compliance officers. By providing a geographic map of your RF airspace, it also makes possible more accurate real-time location tracking of users, 'rogue' access points, and your own wireless APs.

Management

With AWSP, you eliminate human error from the process of installing and configuring your Wi-Fi infrastructure. Your plan is automatically implemented by the AirWave Management Platform, saving you time and eliminating costly errors.

Visibility

The site plan you generate with AWSP is automatically converted into a graphical VisualRF view, so you can view it on an ongoing basis through AMP's browser-based user interface. It's easy to synchronize AWSP and AMP on an ongoing basis, ensuring that you always have an up-to-date site plan for use in troubleshooting and network planning.



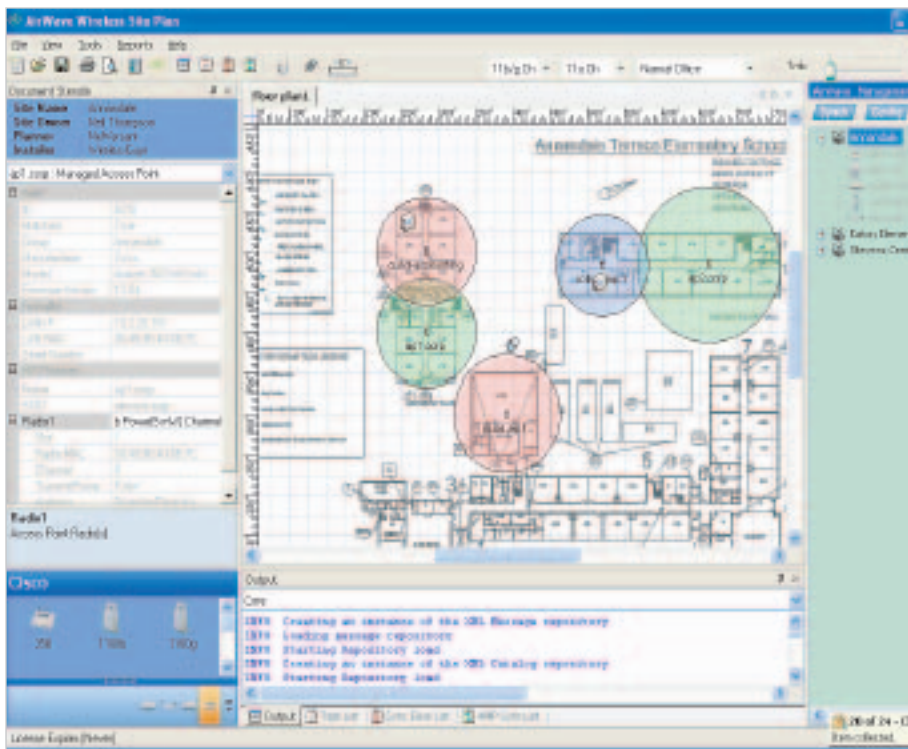
FEATURES + FUNCTIONALITY

- Import any existing graphic to begin to create your wireless site plan
- Drag-and-drop user interface allows you to place access points on the site map quickly and easily
- Automated generation of reports for your network installers
- Automatic provisioning of your wireless APs through synchronization with AMP
- Creation of a "Living Site Plan" that is automatically updated by the AirWave Management Platform
- Visio-based application for familiarity and ease-of-use

Wi-Fi ROI

AWSP dramatically reduces the costs of planning and installing a Wi-Fi network. Instead of a costly and time-consuming site survey, you quickly create a site plan with AWSP's drag-and-drop interface. Rather than creating a labor-intensive RF prediction model that requires you to draw walls and identify their material, AWSP's site plan is updated with actual, real-world RF data when your Wi-Fi devices are installed.





Creating a Site Plan

- Import an existing drawing file (JPEG, CAD, BMP, Visio, etc.)
- Specify the type of environment (dense office, normal, open space, etc.) without having to indicate precise construction materials
- Select your hardware type from the drop-down list of wireless access points
- “Drag-and-drop” the icons into the approximate physical location on the map
- Automatically calculate RF coverage areas based on site-specific parameters as well as manufacturer default settings for that specific access point make and model
- Optionally adjust the RF characteristics of each access point (transmission power, antenna settings, channel, etc.) and recalculate the AP coverage area based on your input

- Use the color-coded system for RF channels to avoid overlapping RF channels that create interference
- Plan for both the 2.4GHz and 5GHz spectrum, including dual radio APs

Installation

- Generate Excel-based installation reports for network installers
- Installers connect the access points according to the site plan, recording the devices’ MAC address, serial number, switch port, cable and any installation notes (i.e., “AP located above the ceiling tile in the executive conference room”) in the installation report. (NOTE: Installers can work in Excel or Visio)
- Installers transmit the reports back to the network planner for integration into the site plan, creating a central repository for all planning and installation information

Synchronization & Provisioning

- AMP automatically discovers the newly installed access points and records their current configuration
- When the site plan is complete and the wireless access points have been installed, simply click a button to automatically synchronize AMP and AWSP
- AMP compares the current device configurations to the settings specified in your site plan
- AWSP creates an audit report that includes the detailed ‘change set’ required to implement your site plan
- After a final review, click the AWSP’s “Configure” button to schedule the necessary configuration changes
- AMP automatically provisions each access point with the appropriate settings and verifies that are changes are implemented successfully

A “Living” Site Plan

- Upon synchronization, AMP imports the Visio file from AWSP (to create a historical document that can be accessed at any time)
- Installation notes are appended to the AP records in AMP’s database so they are always available to the network engineer and Help Desk
- AMP converts the site plan into a Scalable Vector Graphic (SVG) that can be updated with real-time information via VisualRF

Product Information

- Visio-based .NET software application
- One or more copies of AWSP are included with the VisualRF license.
- Additional AWSP copies may be licensed separately
- May be licensed independently of other AirWave software applications

AirWave Wireless Inc.
 1700 South El Camino Real
 Suite 500, San Mateo, CA 94402
 Phone: (650) 286-6100
 Fax: (650) 286-6101

www.airwave.com
General information: info@airwave.com
Sales: sales@airwave.com
Technical support: support@airwave.com

AWSP-001



for wireless that works