



FOR WIRELESS THAT WORKS

VISUALRF VISUALIZATION MODULE

You cannot manage what you cannot see. With VisualRF, everything is visible – even the airwaves.

The VisualRF module is an add-on to the AirWave Management Platform (AMP) that gives you a real-time picture of the actual radio environment of your wireless network. Using the site maps generated by the AirWave Wireless Site Plan software, VisualRF overlays them with real-time radio information from your APs. Now you can see what RF environment really looks like. Using VisualRF, at a glance you can see where the wireless coverage is solid, where there are gaps, where users are connected to the wireless network, and even where unauthorized “rogue” access points are attached to your LAN.

Visibility

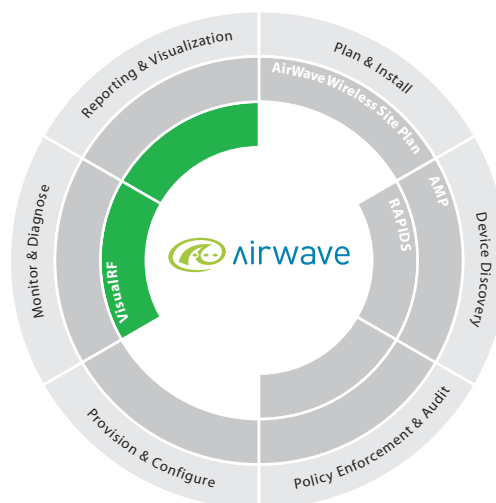
VisualRF enables you to see, from a single graphical console, exactly what is happening in all locations. You’ll be able to quickly determine usage and coverage at every location covered by your WLAN. When you can see what is happening, it is much easier to control and manage.

Security

VisualRF creates a living map and visual audit trail for your entire wireless network infrastructure, showing you exactly where each Wi-Fi device and user is located at all times. VisualRF even helps you identify where rogue access points are located so you can find and remove them quickly and easily.

Management

Because VisualRF is fully integrated with the AirWave Management Platform, you can take immediate action based on the information displayed by VisualRF. If you need to increase the transmission power of an AP or change a channel assignment to enhance WLAN performance, simply toggle to the AMP



FEATURES + FUNCTIONALITY

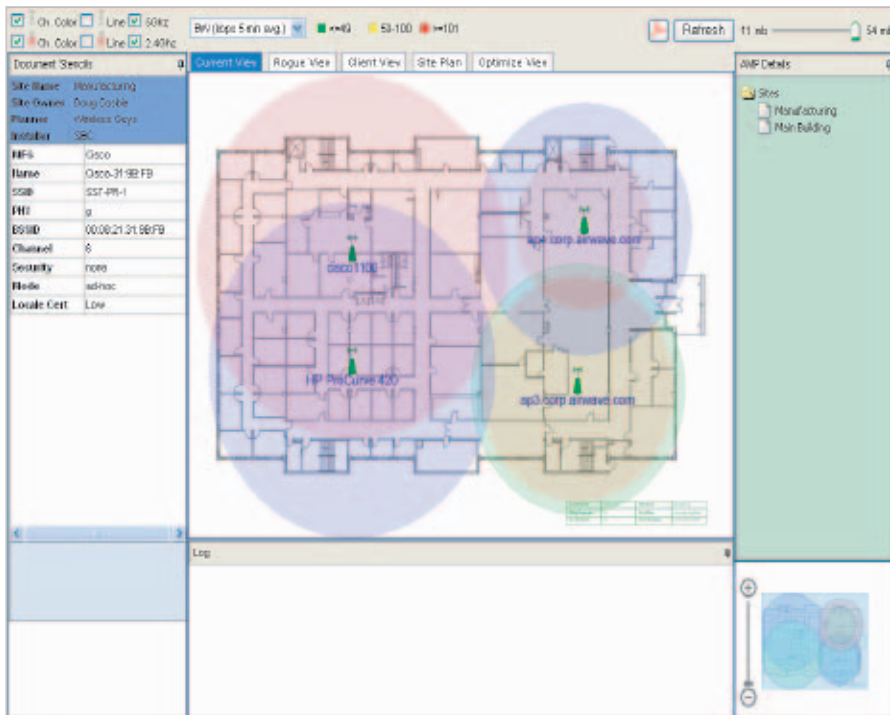
- Imports RF site maps from the AWSP software
- Automatically incorporates real-time data from existing Wi-Fi access points and updates site plan
- Presents real-time graphical monitoring views showing RF coverage area, client/user location, rogue AP location, and more
- “Before” and “After” views of your RF environment so you can review the impact of proposed changes before implementing
- Requires no additional hardware or RF sensors to gather and display RF data
- Integrates with AMP for seamless implementation of RF changes
- Server software module that automatically installs on the same server as your AMP software

screen and implement the required change via AMP’s web-based user interface.

Wi-Fi ROI

With VisualRF, Help Desk support staff and network engineers alike have all the information they need to quickly diagnose and resolve WLAN issues, driving down Wi-Fi support costs.

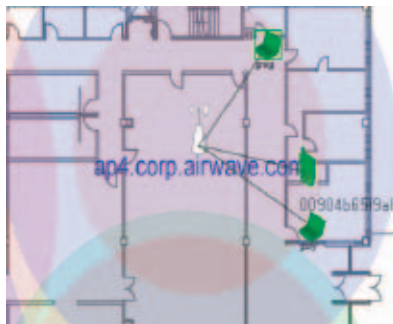




RF Coverage Maps

- Provides real-time updated coverage maps showing the physical location and coverage areas of wireless APs, using RF data gathered from access points and the AirWave Management Client
- Supports both the 2.4GHz and 5GHz spectrum
- Recalculates and redisplay coverage areas by data rate and office environment (normal, high-density, or “open” environments)
- Considers antenna settings, receive sensitivity, transmission power, and other manufacturer settings
- Uses color-coded RF channels for easy identification of potential overlapping channel assignments
- “Pan & Zoom” feature using Scalable Vector Graphics (SVG) to smoothly zoom on a detailed subsection of any RF map
- Toggles to the AirWave Management Platform to change any RF settings

- Creates an Adobe PDF of the RF map to provide a permanent record of your RF environment at a defined date and time



Client View

- Shows where client devices (users) are connected to the wireless network for rapid location identification and trouble-shooting
- Uses different icons for each device type (laptop computer, PDA, wireless VOIP phone, etc.). Icons include username for easy identification

- Icon color reflects current bandwidth utilization for each client device (red = high utilization, etc.)
- Integrates with AMP to allow you to quickly click and toggle to a detailed ‘client view’ with all known information about each client device depicted on the map



Rogue View

- Integrates with the RAPIDS module to place rogue APs in physical space for rapid location and removal
- Uses RF data from multiple access points and/or the AirWave Management Client to triangulate the likely location of the rogue. Accuracy increases as the numbering of discovering devices increases
- Displays all known information about the rogue device, including Name, SSID, BSSID, channel, security settings, operational mode, and more.
- Integrates with RAPIDS to allow you to quickly toggle and view any information about the rogue device discovered via wired network scans

Optimization Views

- Displays simple, easy-to-understand “Before” and “After” views showing the results of AMP’s automated RF channel optimization feature
- Allows you to review and approve the changes required to achieve the optimal RF configuration before implementing them

AirWave Wireless Inc.
 1700 South El Camino Real
 Suite 500, San Mateo, CA 94402
 Phone: (650) 286-6100
 Fax: (650) 286-6101

www.airwave.com
General information: info@airwave.com
Sales: sales@airwave.com
Technical support: support@airwave.com

VisualRF-001



for wireless that works