



AirWave Wireless Inc. is the leading developer of wireless network management and security software for the enterprise. The AirWave Management Platform software provides a single web-based console through which IT can plan, configure, and monitor a wireless network.

## Overview

### Situation

There is an increasing demand for secure, reliable wireless networks in hundreds of remote office locations, with centralized management by the IT staff.

### Solution

Juniper Networks and AirWave Wireless provide a complete security solution integrating the Netscreen-5GT and the AirWave Management Platform software.

### Customer Value

The combination of AirWave Wireless and Juniper Networks provides an easy-to-manage, secure wireless infrastructure that scales to support thousands of locations.

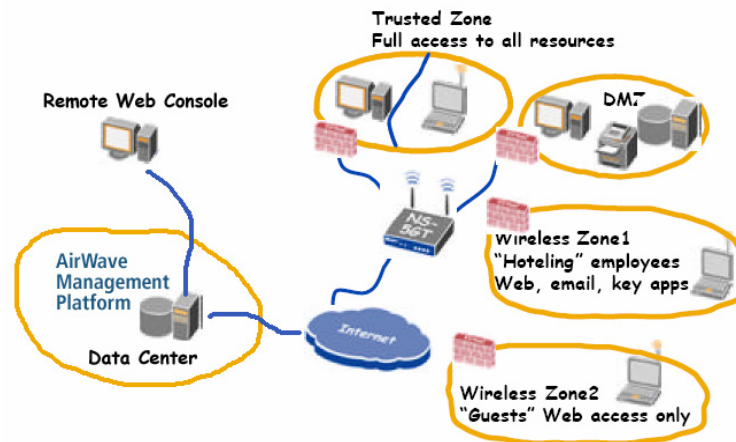
### Situation

Businesses today are moving quickly to provide their employees wireless network access for mission-critical applications. Fortune 500 corporations, retailers, and other large organizations need to deliver secure Wi-Fi networks not just in their corporate headquarters, but in hundreds or thousands of remote offices, retail outlets, and home offices. With wireless networks, security will always be the IT organization's primary concern: sensitive corporate data must be protected as it is broadcast through the air and wireless access points must be protected from unauthorized intruders.

Any wireless security strategy must address four key issues: (1) *Encryption/Data Privacy* to protect data that is transmitted wirelessly; (2) *Access Control/Authentication* to ensure that only authorized users are permitted to connect to the wireless network; (3) *Intrusion Detection* to ensure that no unauthorized 'rogue' wireless access points are connected behind the corporate firewall, and (4) *Wireless Network Management* to ensure that policies are uniformly enforced and that IT has full visibility into the wireless network. Centralized network management is especially critical for large, geographically dispersed networks covering hundreds of remote locations without onsite IT staff. Only a centralized management and monitoring solution can the corporation ensure that its wireless network is as secure as the rest of the network infrastructure.

### Solution

Juniper Networks' Netscreen-5GT Wireless, in conjunction with the AirWave Management Platform (AMP) wireless network management software, provides a scalable end-to-end wireless security solution for organizations with remote Wi-Fi networks. The Netscreen-5GT Wireless is an integrated firewall, VPN, and 802.11b/g wireless access point for remote office and retail environments. The AirWave Management Platform provides centralized management of all the Netscreen-5GT devices and detects any other, unauthorized wireless access points connected to the network.



### Encryption/Data Privacy

The NetScreen-5GT Wireless brings enterprise level security applications, routing protocols and resiliency features to remote offices, retail outlets or broadband telecommuters that want to deploy 802.11b/g networks in a secure manner. It supports a wide range of wireless encryption solutions, including WPA (AES or TKIP), WEP, and IPSEC, to allow the customer to select the most appropriate policy for its infrastructure.

### Authentication/Access Control

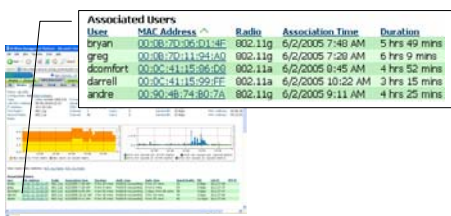
The NetScreen-5GT Wireless supports a wide range of authentication and access control protocols, including 802.1X port-based authentication for enterprises with a RADIUS server at corporate headquarters. The Netscreen-5GT Wireless even offers administrators up to four configurable “Wireless Security Zones” each with a unique SSID that can be used to provision appropriate levels of security for different types of users (employees, guests, contractors, etc.).

### Intrusion Detection

Remote offices far from corporate headquarters are the most likely places to find unauthorized ‘rogue’ access points installed by intruders or, more commonly, by employees themselves. The AirWave Management Platform’s RAPIDS rogue access point detection module automatically scans your entire wired network and alerts you if any rogue devices are connected.

### Wireless Network Management

The AirWave Management Platform is designed to provide you complete visibility and total control over your Wi-Fi network. AMP automatically discovers and monitors all the Netscreen-5GT Wireless devices connected to your network. Through AMP’s web-based user interface, you can see exactly who is connected to each access point, where they are located, how much bandwidth they are using, and how the wireless network is performing. Automated alerts tell you whenever unusual usage patterns are detected. AMP logs every user session for security audits and provides an integrated reporting module that helps you see where your network is being used most heavily and where problems are detected. AMP uses minimal network overhead for management and is specifically designed to accommodate with high-latency networks (such as retail outlets with intermittent satellite connections).



AMP's User-based

### Key Features/Benefits

- End-to-end Security**  
 Juniper Networks and AirWave provide a complete, integrated security solution for remote offices, retail outlets, and home offices.
- Complete Visibility**  
 With Juniper Networks and AirWave, you not only know that your wireless network is secure, you can also see real-time information on every user and device connected to your Wi-Fi network.
- Enterprise Scalability**  
 The AirWave Management Platform is completely scalable to manage small networks with less than 25 Netscreen-5GT Wireless devices up to global networks with 10,000+ wireless nodes.
- Strong Wi-Fi ROI**  
 By using the Netscreen-5GT Wireless, you save money with an all-in-one integrated firewall and wireless access point. The AirWave Management Platform software puts real-time monitoring information at your fingertips to help you prevent problems and speed problem resolution.

Contact AirWave Wireless Inc.  
[www.airwave.com](http://www.airwave.com)

[www.juniper.net](http://www.juniper.net)



CORPORATE HEADQUARTERS  
 AND SERVICE HEADQUARTERS  
 FOR NORTH AND SOUTH AMERICA  
 Juniper Networks, Inc.  
 1194 North Mathilda Avenue  
 Sunnyvale, CA 94089 USA  
 Phone: 888-JUNIPER (888-586-4737)  
 or 408-745-2000  
 Fax: 408-745-2100  
 Technical Support: 408-745-9500

ASIA PACIFIC REGIONAL  
 SERVICE HEADQUARTERS  
 Juniper Networks (Hong Kong) Ltd.  
 Suites 2507-11, 25/F  
 Asia Pacific Finance Tower,  
 Citibank Plaza  
 Central, Hong Kong  
 Phone: +852-2332-3636  
 Fax: +852-2574-7803

EUROPE, MIDDLE EAST, AFRICA  
 REGIONAL SERVICE  
 HEADQUARTERS  
 Juniper Networks B.V.  
 Beech Avenue 3  
 1119 RA Schiphol Rijk  
 Amsterdam, The Netherlands  
 Phone: 31-20-712-5700  
 Fax: 31-20-712-5901

ADDITIONAL SERVICE  
 LOCATIONS  
 Herndon, VA, USA  
 Ogden, UT, USA  
 Westford, MA, USA  
 Beijing, China  
 Sydney, Australia

Copyright © 2004 Juniper Networks, Inc. All rights reserved.  
 Juniper Networks, the Juniper Networks logo, NetScreen, NetScreen Technologies, GigaScreen, and the NetScreen logo are registered trademarks of Juniper Networks, Inc. NetScreen-5GT, NetScreen-5XP, NetScreen-5XT, NetScreen-25, NetScreen-50, NetScreen-100, NetScreen-204, NetScreen-208, NetScreen-500, NetScreen-5200, NetScreen-5400, NetScreen-Global PRO, NetScreen-Global PRO Express, NetScreen-Remote Security Client, NetScreen-Remote VPN Client, NetScreen-IDP 10, NetScreen-IDP 100, NetScreen-IDP 500, GigaScreen ASIC, GigaScreen-II ASIC, and NetScreen ScreenOS are trademarks of Juniper Networks, Inc

Juniper Networks assumes no responsibility for any inaccuracies in this document. Juniper Networks reserves the right to change, modify, transfer, or otherwise revise this publication without notice.